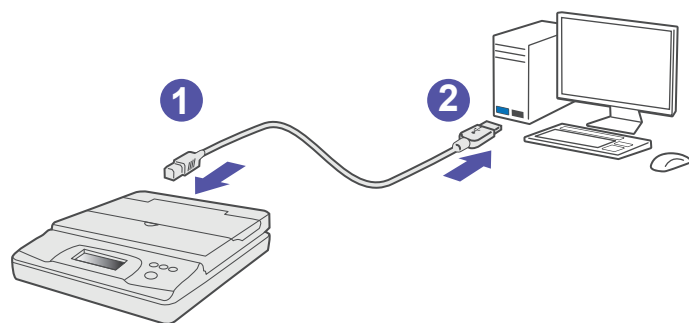




Installing your scale

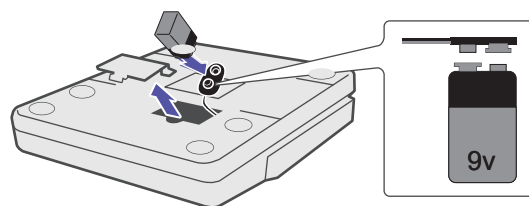
Connect Scale



Note: Set the scale on firm, flat surface.

- If not using the USB to power the scale, you may use a 9-volt battery (not included).
- Open battery compartment cover, attach a 9-volt Alkaline battery and close compartment.

NOTE: Make sure to attach the battery correctly. Attaching the battery backwards can damage the scale and cause smoke or burning.



Using your scale

Operating Temperature Range 59F to 86F (15C-30C).

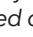
Operating outside this range may require calibration.

To power on the scale

The scale is powered on when your computer is running.

If you are not using USB, press the power button on the front of the scale to turn the scale on and off.

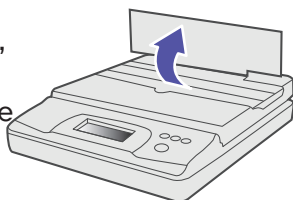
When the scale is first turned on, wait a few seconds for the scale to stabilise before weighing items.


*The display shows **88.8.8.8.8** for a few seconds and then **0.0** when ready. A  will be displayed on the left side of the display when the weight is stable.*

To weigh an item

Place an item on the scale platform.

If using large envelopes, lift the top of the scale platform to a 90-degree position and place the envelope in an upright position on the platform.



A  will appear on the left side of the display when the weight is stable.

Changing the units of measure

Your scale can display weight in English (pounds) or Metric (kilograms) units. The default unit of measure is English.

Press the **Mode** button to toggle between English and Metric units.

Using the Hold button

When an item being weighed extends over the front of the scale and you cannot see the display, you can freeze the display so that the weight is still displayed after removing the item.

- 1 - Place the item on the scale.
- 2 - After a few seconds, press the Hold button and remove the item from the scale.

The weight continues to be displayed for several seconds.

Using the Zero button

You can weigh small items or items that cannot be easily placed on the scale platform by placing the items in a container and using the Zero button to eliminate the weight of the container.

- 1 - Place an empty container on the platform.
- 2 - When the scale is ready, press the Zero button.
*The display will set to zero **0.0**.*
- 3 - Place the items to be weighed in the container.
The display shows the weight of the items, without the weight of the container.
- 4 - After removing the container, press Zero to reset the scale to zero.

Calibration:

The scale can be calibrated through its keys. To calibrate the scale:

1. Hold the Zero button longer than 3 seconds, the LCD will show **CAL** and then **0.0**.
2. Press the Zero button again, the LCD will show the calibration weight (25 lb for 30 lb scale, 50 lb for 70 lb scale).
3. Put the requested weight on the scale platform and press the Zero button again.
4. If the LCD shows **PASS**, the calibration is finished. If **ErrC** is displayed, the calibration has failed and you should repeat steps 1-3.

Troubleshooting

Problem	Solution
No display	<ul style="list-style-type: none">• Ensure the scale is connected to the computer using the cable, or replace the battery.• If not connected to the computer, press the power button.
Lo or low battery displayed	Replace the 9-volt battery.
CAL is displayed	Scale in calibration mode. Press the Power button to return to normal mode.
Negative number is displayed	A Zero value is displayed as a negative number when the items are removed from the scale. Press Zero to reset the scale to zero.
ErrE is displayed	The item on the scale platform exceeds the maximum capacity of the scale. Remove the item immediately to prevent damage to the scale.
Display reads 0.0 with an item	Remove the item from the platform and the press Zero button to return the display to 0.0 so that you can continue weighing items

Note: This equipment has been tested and found to comply with the limits for a Class B digital device, pursuant to part 15 of the FCC rules. These limits are designed to provide reasonable protection against interference in a residential installation. This equipment generates, uses, and can radiate radio frequency energy and, if not installed and used in accordance with the instruction manual, may cause interference to radio communications. However, there is no guarantee that interference will not occur in a particular installation. If this equipment does cause interference to radio or television reception, which can be determined by turning the equipment off and on, the user is encouraged to try to correct the interference by one or more of the following measures:

- Reorient or relocate the receiving antenna.
- Increase the separation between the equipment and receiver.
- Connect the equipment into an outlet on a circuit different from that to which the receiver is connected.
- Consult the dealer or an experienced radio/TV technician for help.

CAUTION: Changes or modifications to this equipment not expressly approved by the party responsible for compliance could void the user's authority to operate the equipment. Shielded I/O cables must used with this equipment to ensure compliance with the limits. Use of unshielded cables is prohibited.



Safety Precautions:

CAUTION: This equipment is intended to be used with limited power circuits with SELV and Non-hazardous energy outputs.

- The scale is not legal for trade
- Do not exceed the scale's maximum weight limit
- Do not place lighted candles, cigarettes, cigars, etc., on the scale.
- Use the equipment only for its intended purpose.
- Use only 9-volt Alkaline battery if needed
- Remove battery if scale is not going to be used for long periods of time.
- Dispose of old batteries properly.