

Parcelsend Essential

Mailmark Franking Discounts

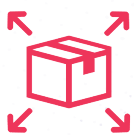


Sending made simple

www.mailcoms.co.uk
info@mailcoms.co.uk
01543 572 776



Parcelsend Essential Includes



Perfect for parcels,
packets and letters



Access Royal Mail and
all your usage and
data online anywhere
in the world



Integrated 5Kg
Scale which can
be upgraded



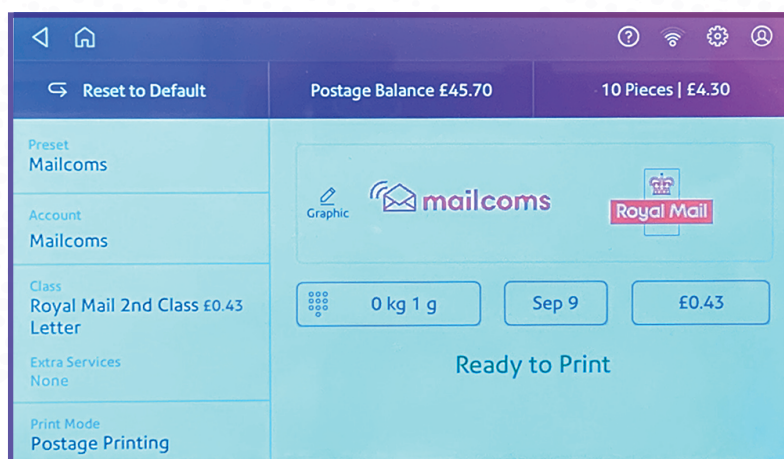
Save time, money and
gain maximum discounts
with Mailmark Technology



Envelope Sealer



Low cost Mail-Ink
plan ensuring a low
cost of ownership**



Why choose the new Parcelsend Essential?

- ✓ No more queuing at the Post Office, contactless collections or simply drop off your items at a Royal Mail collection point such as your local shops and supermarkets.
- ✓ Free tracking and delivery confirmation for 1st and 2nd Class Small & Medium Parcels saving £££'s.
- ✓ Auto Parcelforce access with pre-negotiated rates saving upto 75% off retail pricing***.
- ✓ Track deliveries and mailing activity anytime, to anywhere in the world, anywhere you are through exclusive, on-device apps.
- ✓ Frank Mailmark mail at up to 30 items per minute and save 21% off postage costs vs stamps.*

www.mailcoms.co.uk
info@mailcoms.co.uk
01543 572 776

The Parcelend Essential Business Franking Machine In Detail

Fast Efficient Mailmark Franking

The Parcelsend Essential is our brand new Mailmark franking machine perfect for an average daily volume of up to 30 items per day. Ideally designed for sending parcels, packets and letters.

The Parcelsend Essential also includes access to an all-in-one mailing solution that makes it easier to weigh, compare service options, print shipping labels, track parcels and manage expenses online.

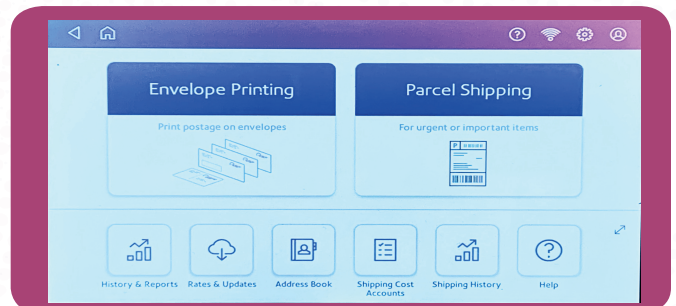
The benefits of Mailmark™

Mailcoms customers will have access to the following Mailmark features:

- Automated tariff updates eliminating surcharges
- Save 21% compared to stamps
- MailMark™ compliant machines are constantly connected for faster and more accurate data.
- Print your own prepay reply envelopes
- Improve your mail presentation with promotional messages
- Enhanced postage online reporting

Options & Apps

- Integrated simple to use 7" touch screen powered by Android
- 3kg postal scale platform upgrade
- Up to 10 departmental accounts
- PIN number access
- LAN & built in wifi connectivity options



Specifications

System dimensions

419 x 292 x 384 mm (LxHxD)

Electrical

Power requirements operates on 240v, AC
50/60HZ 0.65-3A

Envelope

Up to 9.5mm thickness.
Media sizes: 76mm x 127mm up to 330mm x 381mm

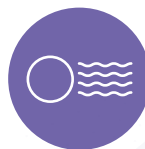
Increased productivity



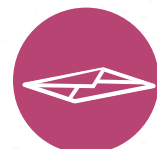
Frank up to 30 items per minute



Semi-Automatic envelope feeding with fast side letter ejection



All UK (Including 'Special Delivery' & 'Signed For Recorded') & overseas postal rates built-in



9.5mm envelope thickness clearance with built-in envelope sealer

Mailcoms Ltd
Units 7-8 Primary Point, Progress
Drive, Cannock, Staffordshire,
WS11 0JF
www.mailcoms.co.uk
info@mailcoms.co.uk
01543 572 776



Strengthen your brand

Enhance standard envelopes by turning them into eye-catching branded mail with five customised logos / slogans.



Fast accurate postage re-crediting

Replenish the Parcelsend Essential 24-hours a day with simple one-touch refills quick, secure and hassle-free.



Keep an eye on postage costs

INVIEW™, the web-based, easy to use, online reporting feature allows you to:

- Have visibility of your postage expenditure by class and format
- Extract information and present simple graphical analysis
- Monitor spending to identify waste e.g. overuse of first class or large letter format



Better connected

Our new Parcelsend Essential can now connect to a secure server via LAN, PC or Wifi connection. This enables faster communication and allows services such as postal tariff changes, software updates and slogans to be downloaded quickly and effortlessly to the machine.



Easy to use

All controls are fully integrated on one clear control panel with user friendly instructions. This will guide the operator through each stage of processing your mail. This will make using the machine very easy and useful to everyone.



* 18% savings versus Royal Mail® 1st class stamps and 21% savings versus Royal Mail® 2nd class stamps. Savings do not include equipment running costs or consumables. No minimum volumes needed (prices correct as of 3rd April 2023).

** Mail-Ink Plan is based on a fair use policy up to 3 ink cartridges per year.

*** Save up to 75% versus Parcelforce® Worldwide non-contract prices via www.parcelforce.com (prices correct as of 25th March 2020).

Mailcoms Ltd
Units 7-8 Primary Point, Progress
Drive, Cannock, Staffordshire,
WS11 0JF
www.mailcoms.co.uk
info@mailcoms.co.uk
01543 572 776



Authorised
independent inspector and
maintainer of franking machines